

6

Centipedes have a pair of poisonous legs.



Count forward and backward by 10's from 7 to 107.



Practice your H and K flash cards for 5 minutes.

Do Speed Drill 6 on page 74.



Record your score in the graph on page 71.

Ounces and Pounds

Many things are weighed using **pounds** (paʊnds) and **ounces** (aʊnts' • əz).

A box of butter weighs one **pound**.

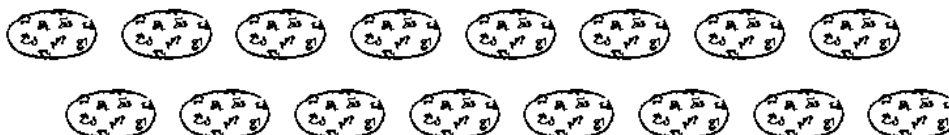


Ounces are used to weigh things that weigh less than a pound. A cookie weighs about one ounce.



1 pound = 16 ounces

If each cookie weighs one **ounce**, then sixteen cookies will weigh one **pound**.



NEW

NEW

Lesson 6

Circle things you could measure with pounds.

1. your weight temperature size of a bucket
 dinnertime bag of feed height of a rabbit pen
 what you lift bale of hay distance to school

Fill in the blanks. Circle the correct words in Numbers 3 and 4.

2. If one small packet of cream cheese weighs one ounce,
16 packets are needed to make one pound.
3. Roger could barely carry the bag of calf feed.
 It weighed 50 **ounces**, **pounds**.
4. Mother bought a twelve-**ounce** **pound** head of lettuce for 90¢.
5. 1 pound = 16 ounces



Write the four related facts.

6.



Twins

$$4 + 8 = 12$$

$$8 + 4 = 12$$

Related Subtraction

$$12 - 8 = 4$$

$$12 - 4 = 8$$

Order of facts may vary.



7.

$$\begin{array}{r} 4 \\ + 8 \\ \hline 12 \end{array}$$

$$\begin{array}{r} 12 \\ - 8 \\ \hline 4 \end{array}$$

$$\begin{array}{r} 12 \\ - 4 \\ \hline 8 \end{array}$$

$$\begin{array}{r} 8 \\ + 4 \\ \hline 12 \end{array}$$

$$\begin{array}{r} 8 \\ + 9 \\ \hline 17 \end{array}$$

$$\begin{array}{r} 17 \\ - 8 \\ \hline 9 \end{array}$$

$$\begin{array}{r} 12 \\ - 4 \\ \hline 8 \end{array}$$

$$\begin{array}{r} 12 \\ - 8 \\ \hline 4 \end{array}$$


We Remember


8. "This millipede has 300 legs," said Mr. Parks. "And here is a centipede with 172 legs." How many legs did the millipede and centipede have altogether?

472 legs



Solution

$$\begin{array}{r} 300 \\ + 172 \\ \hline 472 \end{array}$$

Find each sum or difference.

9.
$$\begin{array}{r} 43 \\ - 31 \\ \hline 12 \end{array}$$

$$\begin{array}{r} 96 \\ - 43 \\ \hline 53 \end{array}$$

$$\begin{array}{r} 25 \\ + 43 \\ \hline 68 \end{array}$$

$$\begin{array}{r} \boxed{1} \\ 45 \\ 23 \\ + 14 \\ \hline 82 \end{array}$$

$$\begin{array}{r} 4 \\ 1 \\ 2 \\ + 7 \\ \hline 14 \end{array}$$

10.
$$\begin{array}{r} 562 \\ + 15 \\ \hline 577 \end{array}$$

$$\begin{array}{r} 754 \\ - 31 \\ \hline 723 \end{array}$$

$$\begin{array}{r} \boxed{1} \\ 287 \\ + 181 \\ \hline 468 \end{array}$$

$$\begin{array}{r} \boxed{1} \\ 398 \\ + 580 \\ \hline 978 \end{array}$$

$$\begin{array}{r} 60 \\ - 30 \\ \hline 30 \end{array}$$

Write $>$, $<$, or $=$.

11. $11 \boxed{<} 7 + 7$

12. $17 \boxed{<} 9 + 9$

13. $7 + 4 \boxed{=} 11$

Write $=$ or \neq .

14. $9 + 7 \boxed{=} 16$

15. $6 + 5 \boxed{=} 11$

16. $10 + 5 \boxed{\neq} 17$

Lesson 6

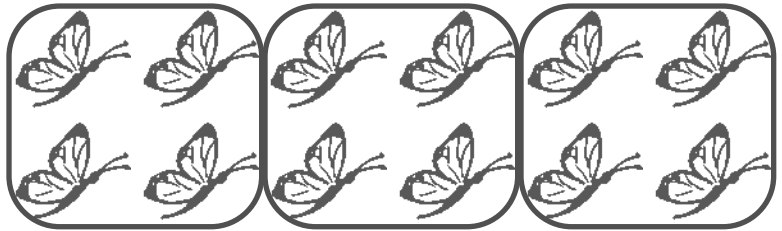


17.	$\begin{array}{r} 12 \\ -9 \\ \hline \end{array}$	$\begin{array}{r} 17 \\ -9 \\ \hline \end{array}$	$\begin{array}{r} 14 \\ -9 \\ \hline \end{array}$	$\begin{array}{r} 16 \\ -9 \\ \hline \end{array}$	$\begin{array}{r} 13 \\ -9 \\ \hline \end{array}$	$\begin{array}{r} 15 \\ -9 \\ \hline \end{array}$	$\begin{array}{r} 18 \\ -9 \\ \hline \end{array}$	$\begin{array}{r} 12 \\ -9 \\ \hline \end{array}$
	$\boxed{3}$	$\boxed{8}$	$\boxed{5}$	$\boxed{7}$	$\boxed{4}$	$\boxed{6}$	$\boxed{9}$	$\boxed{3}$

Circle equal groups and answer the questions.

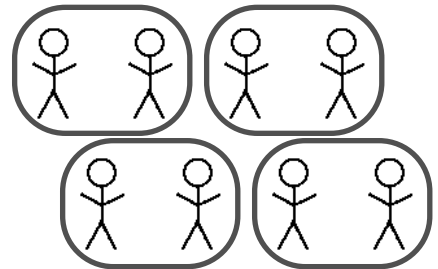
18. $\frac{1}{3}$ of the 12 butterflies on the page were Monarchs. How many were Monarchs?

4 Monarchs

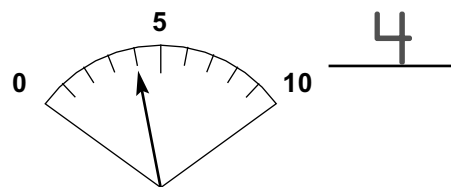
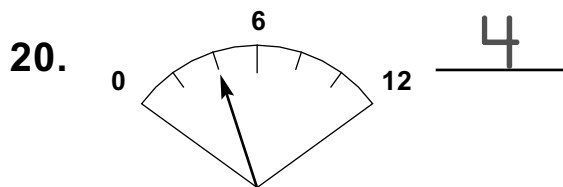


19. $\frac{1}{4}$ of the 8 workers at the nature center were women. How many women were working at the nature center?

2 women



What numbers do the dials show?



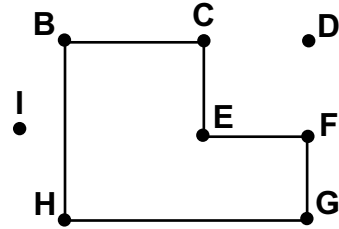
Fill in the blanks.

21. 1 week = 7 days



1 pound = 16 ounces

Which six points mark the polygon?

22. B C E F G H
 Points may be in any order.



Write the names of the coins.

23.  
 dimes pennies

Write the amount two ways.

24.  \$.33 33¢

Follow the directions.

25. Make tally marks to show 15.



26. Draw a line that goes both directions without stopping.



27. Draw a ray that goes one direction without stopping.

